



For Technical support call Toll Free 800-834-9036 • Fax 877-224-4944

## WEATHER BREAKER SIDE PANEL FOR MOTORIZED PRO AWNING Installation Instructions

**Tools Needed:** Pencil, 1/8" drill bit, electric drill, step ladder, measuring tape, hammer, Phillips screw driver.  
For masonry installation: 3/16" masonry drill bit.

**Parts Enclosed:** Weatherbreaker side panel, (4) attachment hooks, (4) mounting screws, (2) cords, (1) cord-lock (housing gear), (2) 3/16" plastic anchors.

**CAUTION: FAILURE TO WEAR SAFETY GLASSES OR TO FOLLOW THE INSTRUCTIONS BELOW CAN RESULT IN PERSONAL INJURY!**

1. Mark a level horizontal line extending from the top bolt hole of the wall bracket to 1" beyond the end of the square bar of the awning (See figure 1).

2. Draw a vertical line extending up from the end of the square bar that intersects with the horizontal line that you marked in step 1 (See Figure 1).

3. For Wood frame installation: At the intersection, drill a 1/8" pilot hole approximately 1" deep.

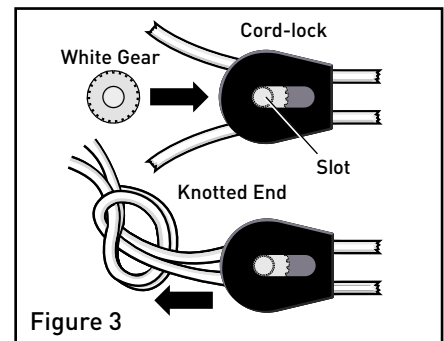
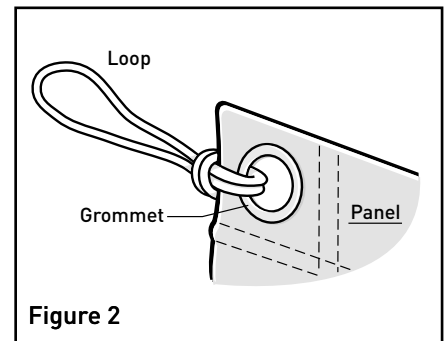
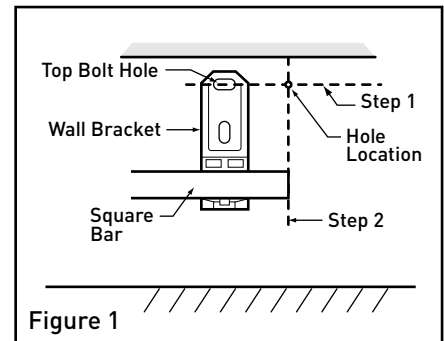
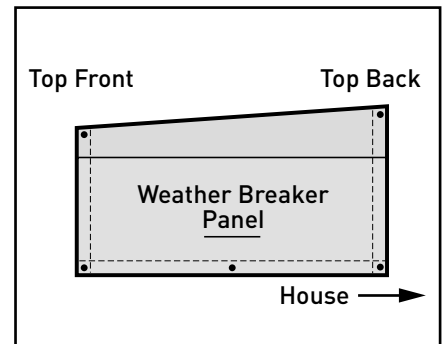
**For Masonry installation:** At the intersection point, drill a 3/16" hole approximately 1-1/2" deep. Insert a supplied plastic anchor into the hole and drive it flush with a hammer.

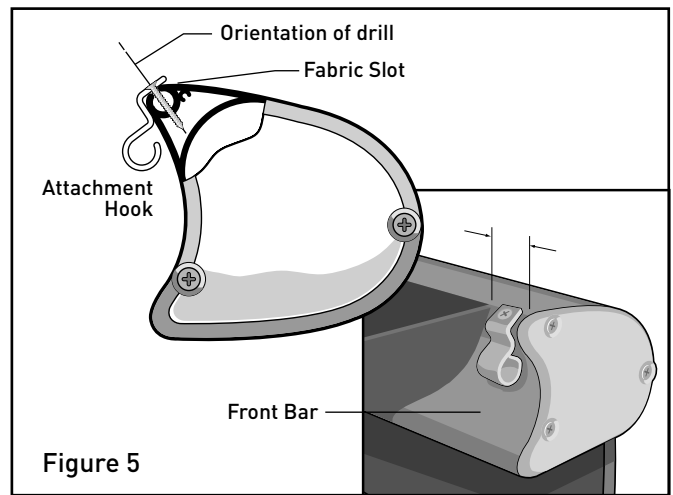
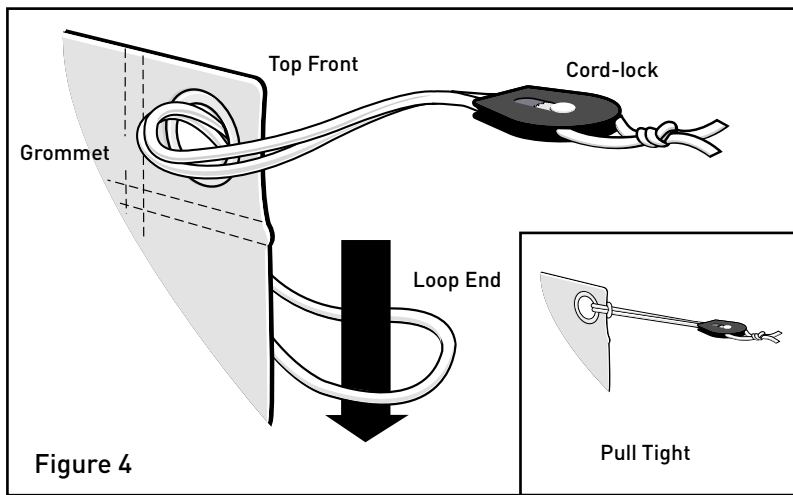
4. Attach the attachment hook by securing with the supplied screw.

5. Tie one of the supplied cords to the panel as shown (See Figure 2).

6. Slide the two ends of the second cord through the cord-lock from the smaller (flat edge) side to the larger (curved) side. (Do not pull the entire cord through). Hold the cord-lock in the center of the cord and separate the two ends of the cord (See figure 3).

7. Slide the white round gear into the large (curved) open end of the cord-lock housing until the gear pops into place. Be sure that the part of the gear that protrudes is aligned with the slot in the cord-lock housing. Tie the two ends of the cord so that they cannot slide back through the cord-lock. Slide the cord-lock all the way towards the knot on the cord.





8. Slide the loop end of the cord through the top front grommet as shown (outside of arc to inside of arc See figure 4)
  9. Slide the knotted end of cord and the cord-lock through the loop of cord on the other side of the grommet as shown in figure 4. Pull the rope tight.
  10. Locate the fabric slot on the top side of the front bar. (see figure 5)
  11. Using the attachment hook as a template set the flat surface of the hook over the fabric slot, centered between the fabric and the end of the front bar. (see figure 5)
  12. With a pencil, mark the location of the hole in the attachment hook on the front bar.
- NOTE: Position the drill to insure that you do not drill through the back wall of the front bar.**
13. Drill a 1/8" hole approximately 1" deep in the front bar.
  14. Place the attachment hook on the front bar and install using the supplied screw. (see figure 5)

### Setup

- Place the loop of cord (attached to the grommet on the back of the panel) over the attachment hook that you installed on the wall.
- Insert the double cords that go through the cord-lock into the opening in the attachment hook on the front bar. Tighten the panel by holding the sides of the cord-lock and pulling the cord. The gear of the cord-lock should move forward to hold the cords at this point.

### Removal

- Slide the gear of the cord-lock back to loosen the cord.
- Remove the cords by sliding them out of the opening in the attachment hook.
- Remove the cord loop from the attachment hook on the house.

**Note: Remove the Weather Breaker panels before closing the awning.**

**WARNING - DO NOT LEAVE YOUR MOTORIZED AWNING EXTENDED UNATTENDED OR DURING EXCESSIVE WINDY OR RAINY CONDITIONS.**